

Canon imageRUNNER ADVANCE & Proposal For

MALAYSIA PRODUCTIVITY CORPORATION, WILAYAH SARAWAK

Prepared by : Nick Yong
Mobile Contact : 016-339 8986
Email address : nick_yong@cmm.canon.com.my

Submission Date : 20th January 2021
Reference No : CMM/QTN/MPCWS/iRADV/1401/21 (v2)
Validity : 30 days from the date of submission

Ref :CMM/QTN/MPCWS/iRADV/1401/21 (v2)

Date :20th January 2021

Canon

Delighting You Always

Malaysia Productivity Corporation
Lot 894, Lorong Demak Laut 3A,
Demak Laut Industrial Park,
Jalan Bako, 93050
Kuching, Sarawak.

Canon Marketing (Malaysia) Sdn. Bhd.
Ground & 3rd Floor, No. 9, Wisma TIB,
Central Avenue, 3rd Mile,
Jalan Tan Sri Amar Kalong Ningkan,
93250 Kuching, Sarawak

Tel: (6082) 575 188

Fax: (6082) 572 411

Tel: 082-439 959

Dear Ms Liyana Othman

RE: CANON imageRUNNER ADVANCE (iR-ADV) PROPOSAL WITH CARD TAGGING SECURED PRINT SOLUTION

First of all, we would like to thank you for giving us the opportunity to quote in for the above mentioned products.

This year, we have introduced our new generation Canon imageRUNNER ADVANCE DX C37xx series MFDs (successor model of our imageRUNNER ADVANCE C35xx III) that comes with an improved performance.

The new imageRUNNER ADVANCE DX C37xx series empower your workforce and accelerate **digital transformation** by evolving your business workflows and productivity with smart technology. A beautiful compact digital transformation hub, this series provides great productivity with simple and efficient document processing, making it an excellent partner for daily office tasks.

Our new imageRUNNER ADVANCE DX C37xx series has **360° security** whereby it will safeguard each step of your digital transformation with complete protection for documents, devices and your network. It is also *mobile*, even on the go, you are always in control. Print from a laptop, tablet, or smartphone to an imageRUNNER ADVANCE DX series seamlessly and securely.

It is **cloud-ready** with a simple touch of a button – you can access, scan to, or print directly from the cloud. Hence it has a built-in cloud solution for you such as uniFLOW Online Express for monitoring copying and printing usages with card tagging as an option. It is also able to equip with other optional cloud solutions such as Therefore Online (Document Management Cloud-based).

We enclosed herewith your specified needs and specification sheets including the usual maintenance package (Total Guarantee Service & Maintenance).

We trust that our quotation is in line with your approval and look forward to your confirmation of order from you soon. We look forward to a fruitful partnership for your business success.

Thank you.

Warmest Regards,

For CANON MARKETING (MALAYSIA) SDN. BHD., Kuching Branch

Nick Yong
Account Manager
Business Imaging Solution Division
Mobile No: 016-339 8986

Christopher Chin
Group Manager
Business Imaging Solution Division
Mobile No: 012-877 3200

FAX FORWARDING SOLUTION

Faxing Out

Conventional Faxing Out Method



Two Proposed Methods



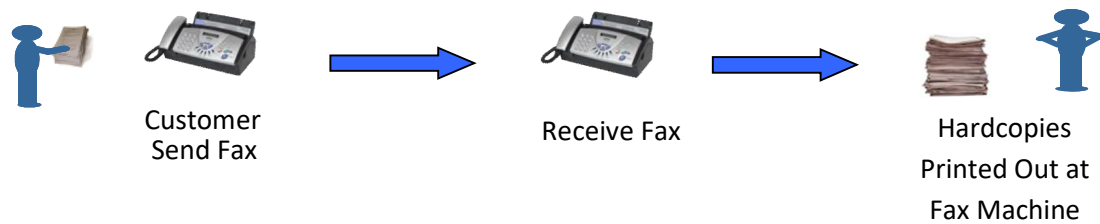
OR



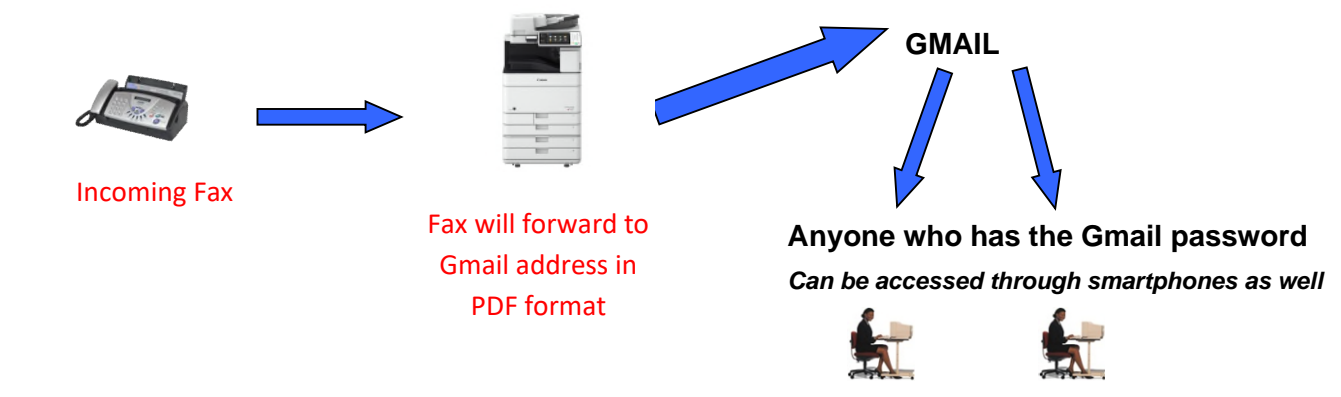
PC FAX: Send faxes from PC through the network and eliminate the need to print out

Incoming Fax

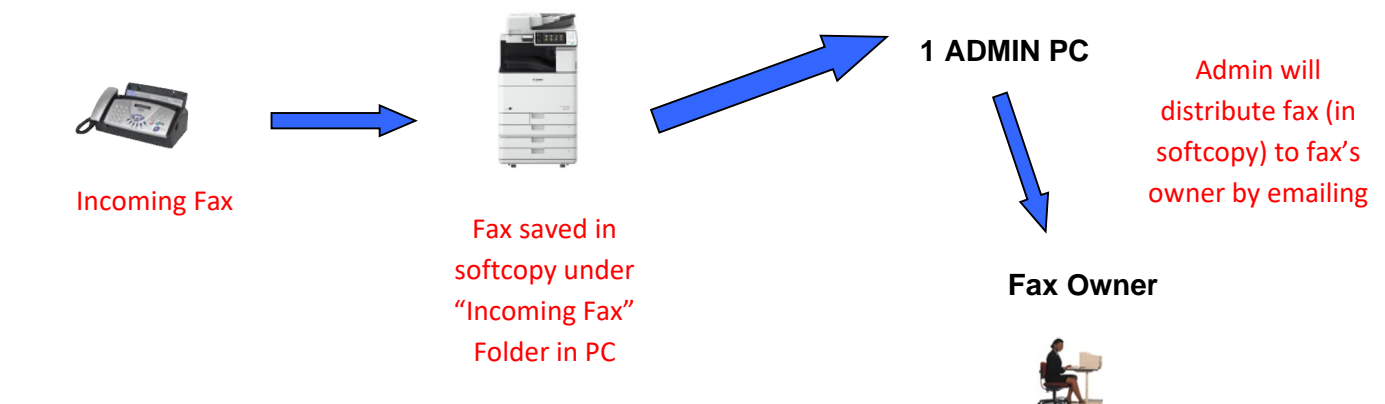
Conventional Receiving Fax Method



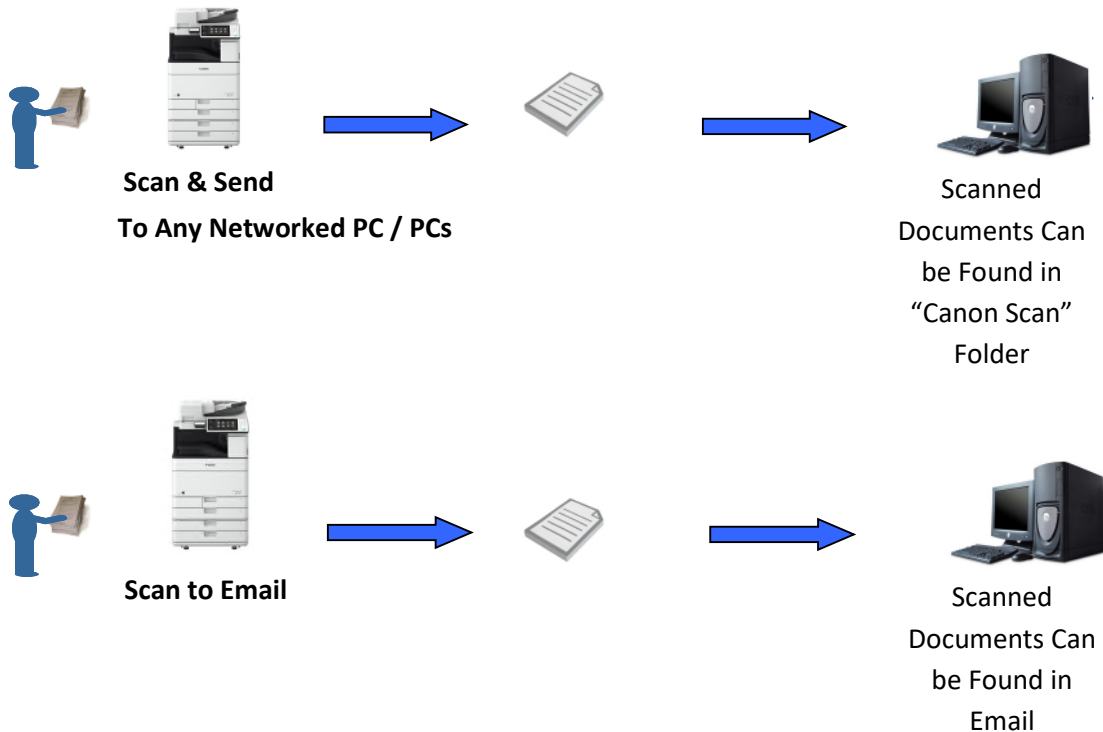
Fax Forwarding Proposed Method



OR



BUILT-IN SCAN & SEND (UNIVERSAL SEND) / SCAN DIRECT TO PC / MOBILE



Note:

"Scan to Email" requires a designated email address for the machine.

"Scan to Mobile" requires wireless network and Canon Print Business App. Direct wireless connection only applicable to C55xx series.

Benefits of Scan & Send

- Scan & Send is a new method of scanning to networked PCs with push of a button. It saves more time than conventional scanning method.
- Multi processes of conventional scanning are eliminated.
- Scan to our built-in **PDF Compact** format to compressed file size 10x smaller than normal Standard PDF – for ease of emailing out to clients/customers.

FEATURES OF uniFLOW ONLINE EXPRESS – CARD TAGGING, SECURED PRINT & REPORTS

YOUR CANON DEVICES JUST GOT MORE **POWERFUL**

Designed to boost productivity in the office, Canon multifunctional devices offer organizations of all sizes a wide range of impressive devices built on an intelligent platform to support and complement every stage of the document lifecycle. To further enhance device capabilities and add value, we have **uniFLOW Online Express**, which come as standard feature of Canon's device.



What is **uniFLOW Online Express**?

uniFLOW Online Express provide easy to install, secure cloud-based authentication, scanning and accounting solution suitable for organizations who do not wish to invest in or manage local servers. The solution aims to upgrade document security, increase employee productivity and facilitate central control of all scanning and copying.



Key Features of uniFLOW Online Express

Flexible Authentication



To secure Canon devices against unauthorized access and usage, users are required to authenticate at a device with a PIN code or their personal company proximity card.

Simple Document Scanning



With uniFLOW Online Express users can scan documents directly from any connected Canon imageRUNNER ADVANCE. The secure 'Scan to Myself' and 'Scan to Google Drive™' promote immediate gains in productivity.

Track Print, Scan and Copy Costs



Tracking of print/copy usage and costs is made easy with uniFLOW Online Express' graphical reports and dashboard. The administrator can gain insights into usage trends, and make informed decisions for cost reduction measures.

Immediate Benefits

- uniFLOW Online Express enables device security for organizations.
- uniFLOW Online Express enables simple and secure scanning for employees.
- uniFLOW Online Express tracks all print, copy, scan and fax costs.
- uniFLOW Online Express means no costs for local servers and their maintenance.
- uniFLOW Online Express can be easily upgraded to uniFLOW Online with additional functions.

Extends device capability to offer **SECURITY, SCAN to CLOUD** and **REPORTING**

Cloud Connected

Simple Scanning

Flexible
Authentication

Track Print, Scan &
Copy Usage

uniFLOW
online
express



Enhance your device security with Authentication

- ✓ Prevent unauthorized access to machine
- ✓ Enhance document security
- ✓ Track and Control activities



Offers **flexibility** & **choices** for customer



Flexible Authentication



Maintain device security by requiring the user to login before gaining access to the device or selected device functions.

MULTIPLE OPTIONS FOR AUTHENTICATION

- | | |
|---|--|
| 1 PIN CODE
Min: 3 , by default: 4 , Max: 10 | 2 CARD [or PIN]
Users can self-register as well |
| 3 CARD and PIN CODE | 4 DEPT ID /DEPT ID + PIN CODE
Up to 100 department IDs |

1 PIN CODE Min: 3 , by default: 4 , Max: 10



2 CARD Users can self-register as well



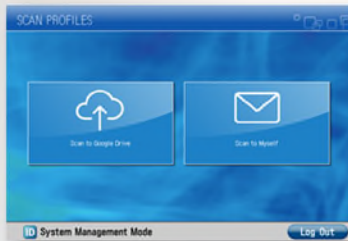
3 CARD + PIN CODE



4 DEPT ID / PIN CODE Up to 100 department IDs



Simple Scanning

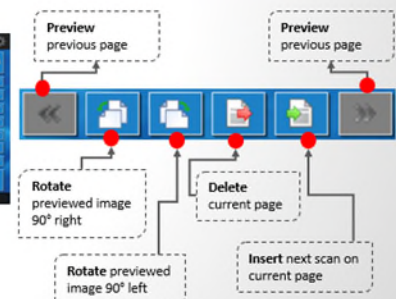
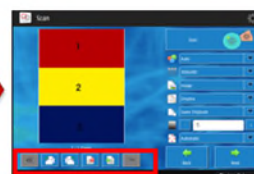
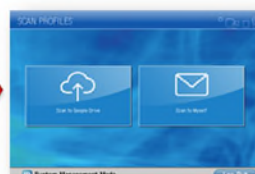
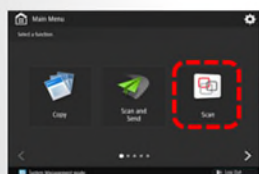


Scan workflow follows the user from device to device.

MULTIPLE OPTIONS FOR AUTHENTICATION

1 SCAN TO GOOGLE DRIVE
Requires User's
Authorisation [one-time]

2 SCAN TO EMAIL



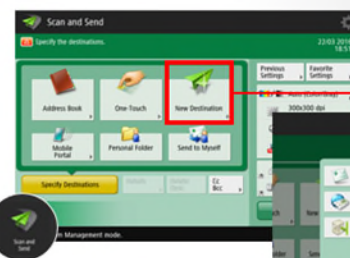
Simple Scanning



UOE MEAP Scan app is useful when there is a **requirement for Scan to Cloud - Google Drive.**

For other type of destinations, user can use the usual MFD Scan and Send.

* Limited image editing functions as compared to standard universal send.



Standard Universal Send remains available for the following requirement:

1. Scan to Mobile
2. Personal Folder
3. Send to Myself
4. Scan to Email
5. Scan to I-Fax
6. Scan to Folder

*Scan to fax is available, it requires fax hardware option. Not shown in illustration here.



Access Control List for UOE Scan

Profile Settings

Name: Scan to Google Drive

Icon: Default (selected)

Access control

Please note that currently everyone has access to the scan profile. Please add a user or a group to define the access rights.

Profile Settings

Users: Administrator, Angie Tan, RootAdmin, Solution Marketing 2

Groups: Everyone, Administrators, Marketing

Access Control: Add, Allow, Deny

Set who is Allowed or Denied for Scan to Google Drive [Default is allowed for everyone], addressing the concerns of IT Managers.

Leaving the list empty without any users/groups on the Allowed or Denied list denies everyone access to the corresponding feature.

Selecting the group Everyone allows/denies access to all users and groups of the tenant.

Access Control List for UOE Scan

ACL control for Scan to Google Drive

Access Control

Add: Everyone, Administrators, Marketing

Profile Settings

Name: Scan to Google Drive

Icon: Scan to Google Drive (selected)

Access Control

Add: Everyone, Administrators, Marketing

スキャンプロファイル

Googleドライブ (selected)

自分へ送信

Track Print, Scan & Copy Usage



Track and report on activity of connected Canon devices

Device job logs are sent by the device to UOE

Define different price profiles

Different printers can be allocated individual price profiles

Display graphical reports

Visually easy to understand | Flexibly adjust report period

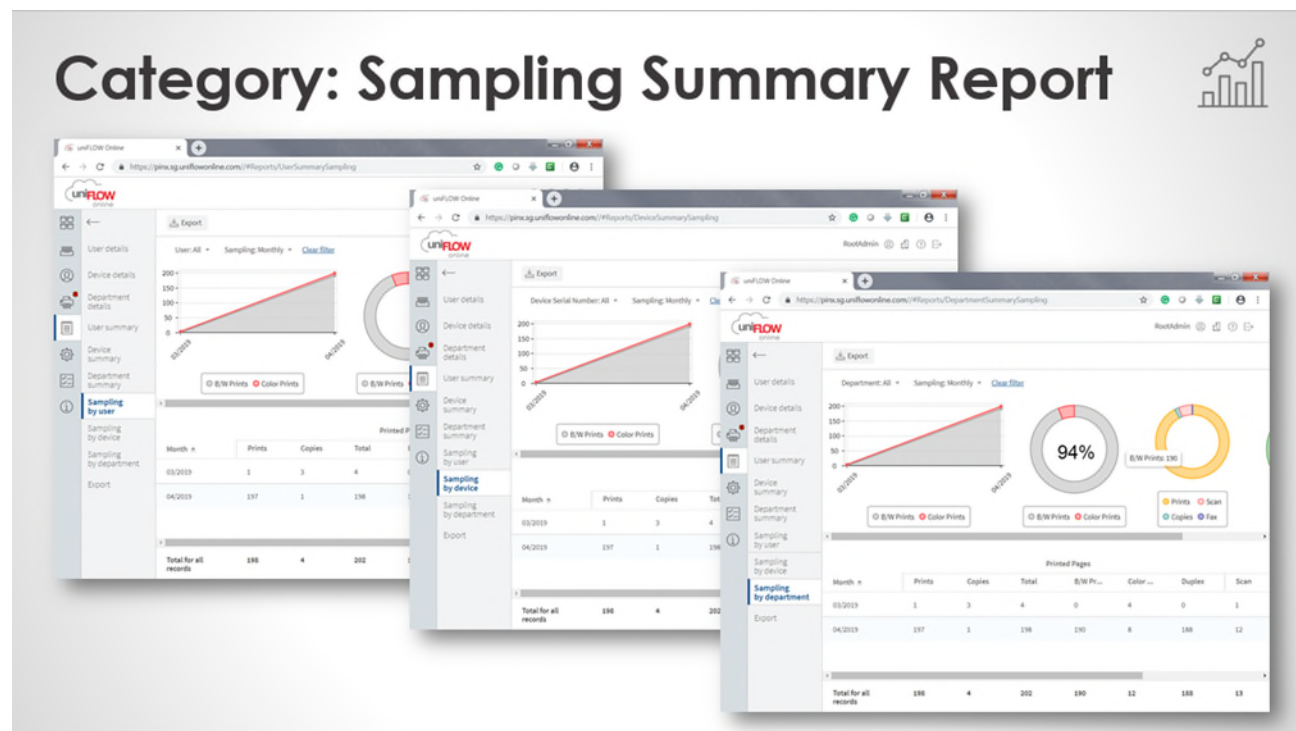
Export CSV Reports

CSV reports can be exported for offline analysis

3 Categories of Report | 9 Reports in Total

	Detail	Summary	Sampling
User	✓	✓	✓
Department	✓	✓	✓
Device	✓	✓	✓

Category: Sampling Summary Report



Category: Detail Report



The screenshots show the 'unifiFLOW Online' interface with various report filters applied. The first screenshot shows 'User details' with a table of jobs. The second shows 'Device details' with a table of jobs. The third shows 'Department details' with a table of jobs. Each table has columns for Job name, Total Pages, Total cost, Total B/W, Duplex, Price, and Date.

Dashboard



Activity - pie chart - Monthly

Notifications

- MEAP Applet Update** (04/11/2019)
MEAP applet version 4.8.3 has been released. Please consider updating. [Delete](#)
- Connect with Google Drive** (04/04/2019)
Connect unifiFLOW Online with your Google Drive account. [Connect](#) [Delete](#)
- Customize how to log in to the device** (04/03/2019)
Select your login methods using the following link. [Device login](#) [Delete](#)
- Add price profile** (04/03/2019)
Configure your printer price profile using the following link. [Price Profile](#) [Delete](#)

Identities

Type	Value
Email	doris_tan@canon.com.sg
PN	***
unifiFLOW Online Account	doris_gims@unifiFLOW.onmicrosoft.com

Widgets can be added / removed. Can also drag and drop around.

- Administrators will see overall activities as well as configuration widgets
- Users mainly see widgets for their own activities

Track Print, Scan & Copy Usage

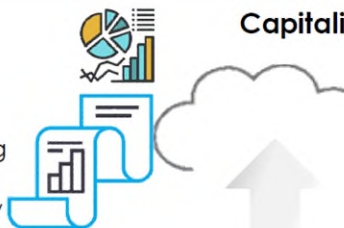


Export detail report
for the last 6 months

Bad Hair Office			
uniFLOW online			
Mary Gelhaus			
←	Date	File size	
User details	12/2018 (current month)	9.4 KB	Download
Device details	11/2018	46.2 KB	Download
Department details	10/2018	15.4 KB	Download
User summary	09/2018	14.6 KB	Download
Device summary	08/2018	20.3 KB	Download
Department summary	07/2018	16.3 KB	Download
Sampling by user	06/2018	25 KB	Download
Sampling by device			
Sampling by department			
Export			

✓ Centralised Control & Management:

- Job logs sent to cloud for centralised accounting & reporting
- Configuration data stored in cloud for easy deployment



Capitalising on the cloud technology to achieve:

- ✓ Low Start-up Cost
- ✓ Low Maintenance Cost & Effort
- ✓ High Scalability, Flexibility & Mobility



Outstanding Quality & Reliability

Award Winning Technology



Security

- ✓ Preventive Security
- ✓ Device Security
- ✓ Data & Network Security

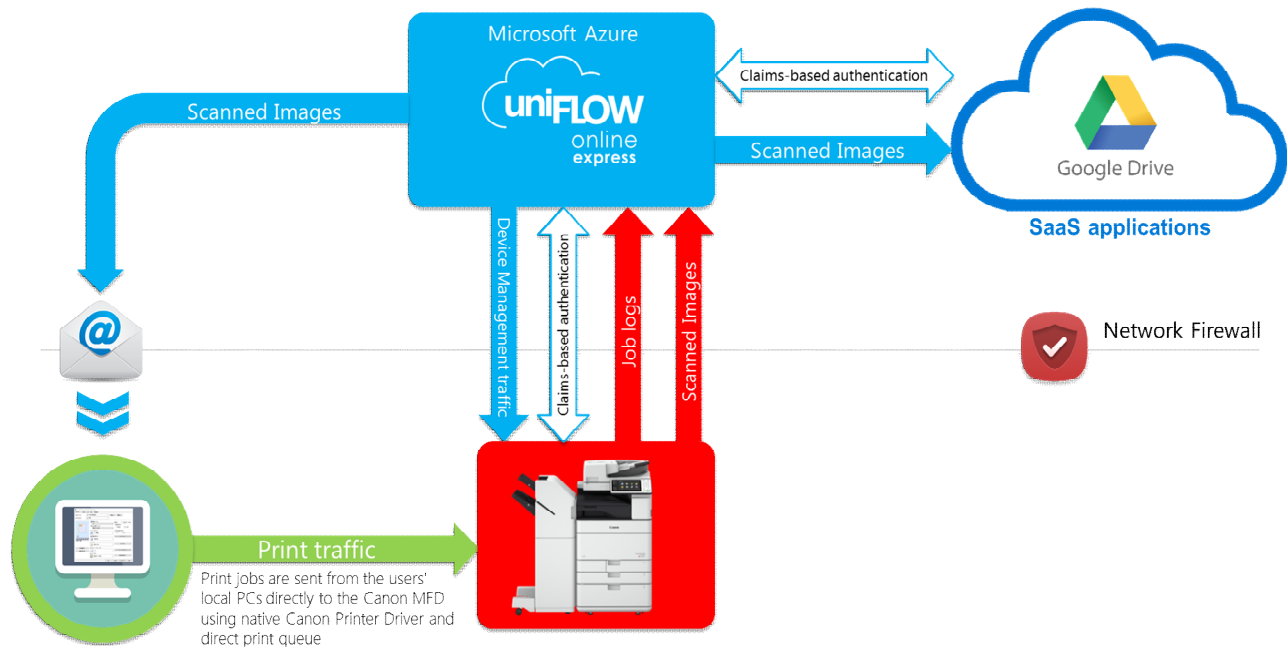


Personalised Experience

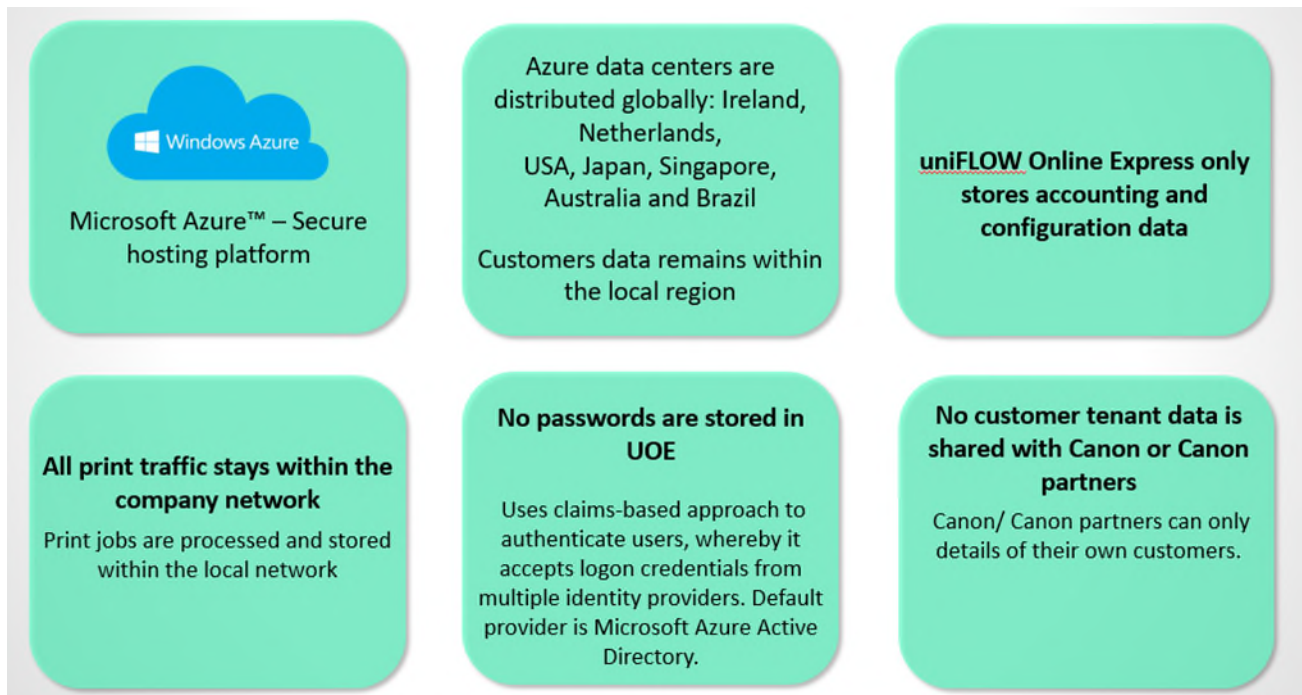
- ✓ Personalised workflow & settings upon login
- ✓ Direct Scan to Cloud
- ✓ Intuitive & Efficient



SYSTEM OVERVIEW



SYSTEM SECURITY



QUOTATION FOR MALAYSIA PRODUCTIVITY CORPORATION, KUCHING

Specifications for imageRUNNER ADVANCE DX C3725i (B/W & Color)

Main Unit	<ul style="list-style-type: none">✎ 25 prints in black & color per minute✎ 320 GB HDD / 3 GB RAM✎ Standard Automatic Stackless Duplexing✎ ID Management / Password up to 1,000 users✎ MEAP Ready - for Upgrading (UniFLOW supported)✎ Scanning Speed: 70ipm (B/W & Color)✎ Standard & Bypass : 550 x 2 Trays + 100 sheets bypass (A4/A3)✎ Recommended Monthly Volume: Black & Color 1k-13k	
Copy	<ul style="list-style-type: none">✎ Electronic Sorting up to 999 sets (Scan Once Print Many)✎ Reduction / Enlargement 25%-400%✎ Special Features: ID Copy, Mode Memory, Booklet, Rotation Sorting, etc✎ 600 dpi x 600 dpi	
Universal Send (Scan To PC/Mobile)	<ul style="list-style-type: none">✎ File Format in PDF, JPEG, TIFF, XPS & PDF Compact✎ Sending method: E-mail, Shared Folder, Desktop PCs, Mobile or Faxes	
Network Printing & Wireless Print/Scan	<ul style="list-style-type: none">✎ True 1200 x 1200 dpi print quality✎ UFR II , PCL✎ Remote User Interface to monitor on machine usage and reports	
Fax	<ul style="list-style-type: none">✎ Super G3 Fax✎ Up to A3 Faxing✎ Multiple Lines – 2 Lines Faxing (requires 2nd line fax board)	
Model	imageRUNNER ADVANCE DX C3725i (iR ADV DX C3725i) c/w Network Printing (UFR II/PCL), Scan & Send To PC/Thumbdrive/Mobile, & Pedestal	
Features	(COPY / PRINT / PUSH SCAN / FAX)	
Purchase Option	Rental (2 Years)	Rental (3 Years)
Hardware Model: C3725i	RM 515.00 Per Month	RM 365.00 Per Month
Optional Card Tagging	Add RM 62.00 Per Month, if required	Add RM 43.00 Per Month, if required

Specifications for imageRUNNER ADVANCE DX 4725i (B/W)

Main Unit	<ul style="list-style-type: none"> ✖ 25 prints in black per minute ✖ 320 GB HDD / 3 GB RAM ✖ Standard Automatic Stackless Duplexing ✖ ID Management / Password up to 1,000 users ✖ MEAP Ready - for Upgrading (UniFLOW supported) ✖ Scanning Speed: 70ipm ✖ Standard & Bypass : 550 x 2 Trays + 100 sheets bypass (A4/A3) ✖ Recommended Monthly Volume: Black 1k-15k
Copy	<ul style="list-style-type: none"> ✖ Electronic Sorting up to 999 sets (Scan Once Print Many) ✖ Reduction / Enlargement 25%-400% ✖ Special Features: ID Copy, Mode Memory, Booklet, Rotation Sorting, etc ✖ 600 dpi x 600 dpi
Universal Send (Scan To PC/Mobile)	<ul style="list-style-type: none"> ✖ File Format in PDF, JPEG, TIFF, XPS & PDF Compact ✖ Sending method: E-mail, Shared Folder, Desktop PCs, Mobile or Faxes
Network Printing & Wireless Print/Scan	<ul style="list-style-type: none"> ✖ True 1200 x 1200 dpi print quality ✖ UFR II , PCL ✖ Remote User Interface to monitor on machine usage and reports
Fax	<ul style="list-style-type: none"> ✖ Super G3 Fax ✖ Up to A3 Faxing ✖ Multiple Lines – 2 Lines Faxing (requires 2nd line fax board)

Model	imageRUNNER ADVANCE DX 4725i (iR ADV DX 4725i)	
	c/w Network Printing (UFR II/PCL), Scan & Send To PC/Thumbdrive/Mobile, Fax & Pedestal	
Features	(COPY / PRINT / PUSH SCAN / FAX)	
Purchase Option	<u>Rental (2 Years)</u>	<u>Rental (3 Years)</u>
Hardware Model: 4725i	RM 515.00 Per Month	RM 365.00 Per Month
<i>Optional Card Tagging</i>	<i>Add RM 62.00 Per Month, if required</i>	<i>Add RM 43.00 Per Month, if required</i>

Specifications for imageRUNNER ADVANCE DX 4745i (B/W)

Main Unit	<ul style="list-style-type: none">✎ 45 prints in black per minute✎ 320 GB HDD / 3 GB RAM✎ Standard Automatic Stackless Duplexing✎ ID Management / Password up to 1,000 users✎ MEAP Ready - for Upgrading (UniFLOW supported)✎ Scanning Speed: 70ipm✎ Standard & Bypass : 550 x 2 Trays + 100 sheets bypass (A4/A3)✎ Recommended Monthly Volume: Black 1k-23k
Copy	<ul style="list-style-type: none">✎ Electronic Sorting up to 999 sets (Scan Once Print Many)✎ Reduction / Enlargement 25%-400%✎ Special Features: ID Copy, Mode Memory, Booklet, Rotation Sorting, etc✎ 600 dpi x 600 dpi
Universal Send (Scan To PC/Mobile)	<ul style="list-style-type: none">✎ File Format in PDF, JPEG, TIFF, XPS & PDF Compact✎ Sending method: E-mail, Shared Folder, Desktop PCs, Mobile or Faxes
Network Printing & Wireless Print/Scan	<ul style="list-style-type: none">✎ True 1200 x 1200 dpi print quality✎ UFR II , PCL✎ Remote User Interface to monitor on machine usage and reports
Fax	<ul style="list-style-type: none">✎ Super G3 Fax✎ Up to A3 Faxing✎ Multiple Lines – 2 Lines Faxing (requires 2nd line fax board)

Model	imageRUNNER ADVANCE DX 4745i (iR ADV DX 4745i)	
	c/w Network Printing (UFR II/PCL), Scan & Send To PC/Thumbdrive/Mobile, Fax & Pedestal	
Features	(COPY / PRINT / PUSH SCAN)	
Purchase Option	Rental (2 Years)	Rental (3 Years)
Hardware Model: 4745i	RM 630.00 Per Month	RM 560.00 Per Month
Optional Card Tagging	Add RM 62.00 Per Month, if required	Add RM 43.00 Per Month, if required
Optional Staple Finisher + Tray	Add RM 300.00 Per Month, if required	Add RM 213.00 Per Month, if required

Specifications for imageRUNNER 2625i (B/W)

Main Unit	<ul style="list-style-type: none">✎ 25 prints in black per minute✎ 2 GB RAM✎ Standard Automatic Stackless Duplexing✎ ID Management / Password up to 1,000 users✎ MEAP Ready - for Upgrading (UniFLOW supported)✎ Scanning Speed: 25ppm✎ Standard & Bypass : 550 x 2 Trays + 100 sheets bypass (A4/A3)✎ Recommended Monthly Volume: Black 1k-10k
Copy	<ul style="list-style-type: none">✎ Electronic Sorting up to 999 sets (Scan Once Print Many)✎ Reduction / Enlargement 25%-400%✎ Special Features: ID Copy, Mode Memory, Booklet, Rotation Sorting, etc✎ 600 dpi x 600 dpi
Universal Send (Scan To PC/Mobile)	<ul style="list-style-type: none">✎ File Format in PDF, JPEG, TIFF, XPS & PDF Compact✎ Sending method: E-mail, Shared Folder, Desktop PCs, Mobile or Faxes
Network Printing & Wireless Print/Scan	<ul style="list-style-type: none">✎ True 1200 x 1200 dpi print quality✎ UFR II , PCL✎ Remote User Interface to monitor on machine usage and reports
Fax (optional)	<ul style="list-style-type: none">✎ Super G3 Fax✎ Up to A3 Faxing✎ Multiple Lines – 2 Lines Faxing (requires 2nd line fax board)

Model	imageRUNNER 2625i (iR ADV 2625i)	
	c/w Network Printing (UFR II/PCL), Scan & Send To PC/Thumbdrive/Mobile, Fax & Pedestal	
Features	(COPY / PRINT / PUSH SCAN / FAX)	
Purchase Option	Rental (2 Years)	Rental (3 Years)
Hardware Model: 4725i	RM 358.00 Per Month	RM 255.00 Per Month
Optional Fax Feature	Add RM 72.00 Per Month, if required	Add RM 50.00 Per Month, if required
Optional Card Tagging	Add RM 62.00 Per Month, if required	Add RM 43.00 Per Month, if required

TERMS & CONDITIONS

1. Rental Scheme

*Initial down-payment of 2 months prepaid and 1 month current are required. CMMSB shall assign or outsource the collections of the monthly rentals to a financial institution. Therefore, CMMSB shall by the time of contract execution to inform the customer of the said financial institution. Interest at 1.5% per month to be imposed for outstanding payment. In the event of premature termination within the initial 24 months of contract, customer must pay the financial institution the balance outstanding PLUS tax compensation.

**waived for Malaysia Productivity Corporation, Kuching*

2. Delivery

5 working days upon confirmation of order. Subject to approval (for new account) and stock availability.

3. Validity

All prices are quoted in RINGGIT MALAYSIA. Prices quoted are valid for 90 days from the date of this quotation.

4. Re-allocation Fees

In event of re-allocation of any Canon machines, re-allocation fees may be charged. Kindly check with your respective Account Managers.

TOTAL GUARANTEE SERVICE & MAINTENANCE

	Model	Color (A3 / A4)	Black (A3 / A4)
Meter Charges	iR ADV DX C3725i	40 cents per copy	2.8 cents per copy
	iR 2625i	N/A	2.8 cents per copy
	iR ADV DX 4725i / 4745i	N/A	2.8 cents per copy

Includes:-

- ✓ Services & maintenance within 40KM from service centre
- ✓ Spare parts
- ✓ Consumables like toner and drum except paper
- ✓ Mandatory retrofit as and when developed
- ✓ Training / Demo
- ✓ Installation and delivery (charges waived)
- ✓ eMaintenance

CONTACTS

Nick Yong

Account Manager
Business Imaging Solution Division

M: (6016) 339 8986

nick_yong@cmm.canon.com.my

Christopher Chin

Group Manager
Business Imaging Solution Division

M: (6012) 877 3200

christopher_chin@cmm.canon.com.my

Canon Marketing (Malaysia) Sdn. Bhd.

Ground & 3rd Floor, No. 9, Wisma TIB, Central Avenue, 3rd Mile,
Jalan Tan Sri Amar Kalong Ningkan,
93250 Kuching, Sarawak

Tel: (6082) 575 188 | Fax: (6082) 572 411